

Vancouver's International Performing Arts Festival
Jan 15 – Feb 3, 2013 · pushfestival.ca

ANNUAL REPORT



PuSh
cross the line

“One of the most anticipated events on the arts
and culture calendar, a guaranteed opportunity
to see works unlike anything you’ve seen before.”

Stuart Derdeyn, THE PROVINCE

PHOTOS. P.4 *Opening Gala*: Tim Matheson; P.5 *Club PuSh*: Tim Matheson, *Norman Armour*: Yukiko Onley, *Peter Dickinson*: Darlene Sunderland; P.6 *Do You See What I Mean?*: Liesbeth Bernaerts, *Sometimes I think, I can see you*: Tim Matheson; P.7 *Encore*: Michael Slobodianhirez, *Testament*: Doro Tuch, *Haptic + Holistic Strata*: YCAM; P.8+9 *Famous Puppet Death Scenes*: Jason Stang, *Tanya Tagaq*: Nadya Kwandibens, *Studies in Motion*: Eadweard Muybridge, *Crime and Punishment*: Tim Matheson, *Taylor Mac*: Drew Gerasi, *Haircuts by Children*: John Lauener, *Soledad Barrio and Noche Flamenca*: Steve Mayeda, *Black Rider*: Ian Jackson, *2011 Festival photos*: Tim Matheson, *Jerk*: Mathilde Darel, *Do You Want What I Have Got? A Craigslist Cantata*: David Cooper; P.10 *Assembly and Talkback photos*: Liesbeth Bernaerts, *Volunteer photos*: Tim Matheson; P.11 *Do You See What I Mean?*: Liesbeth Bernaerts; P.14 *A Crack in Everything*: Juniper Shuey; **BACK COVER** *King Lear*: Dirk Bleicker, *Ana Sokolovic's Svadba/Wedding*: Donat Photography, *Testament*: Doro Tuch, *Haptic + Holistic Strata*: YCAM, *Cédric Andrieux*: Marco Caselli Nirmal, *Do You See What I Mean?*: Juan Saez, *Still Standing You*: Phile Deprez, *A Crack in Everything*: Juniper Shuey.

PuSh International Performing Arts Festival Society

300-640 WEST BROADWAY, VANCOUVER, BC V5Z 1G4 CANADA
PHONE 604.605.8284 OR TOLL FREE AT 1.866.608.8284 FAX 604.874.7874
INFO@PUSHFESTIVAL.CA REGISTERED CHARITY #82954 9948 RR0001

pushfestival.ca ←



You know you want to cross it.

The line between safe and risky, between ordinary and adventurous.
Pushing artistic boundaries is what the PuSh Festival is all about.
And crossing that line with you is what makes it all worthwhile.
See you on the other side.

PuSh
cross the line



A MEETING PLACE FOR CREATIVE MINDS

» VANCOUVER'S MOST EXPECTATION-DEFYING CONTEMPORARY ARTS FESTIVAL« THE VANCOUVER SUN

ATTENDANCE → 34,000+		20 DAYS · 16 PERFORMANCE VENUES 190+ PERFORMANCES AND EVENTS	
18 MAIN PROGRAM SHOWS · 3 WEEKS OF CLUB PUSH · 2 STUDENT PRODUCTIONS · 1 LECTURE 3 FREE FILMS · 1 OPENING NIGHT GALA · 16 ARTIST TALKS · 12 ASSEMBLY NETWORKING EVENTS		79% AVERAGE HOUSE CAPACITY FOR PERFORMANCES WITH 44 SELLOUTS	4,300 FACEBOOK FANS 4,600 TWITTER FOLLOWERS 10,700 EMAIL LIST
85,530 VISITS FROM 52,905 UNIQUE VISITORS TO PUSHFESTIVAL.CA			
51,737,530 EARNED MEDIA IMPRESSIONS ACROSS PRINT, RADIO, TV AND ONLINE. <small>(IMPRESSION NUMBERS VERIFIED BY MRP MEDIA RELATIONS POINTS)</small>	18 BOARD MEMBERS 7 PERMANENT STAFF 20 CONTRACTORS 8 YOUNG AMBASSADORS 25 LEADERS COUNCIL MEMBERS OVER 270 VOLUNTEERS	275 ARTISTS PRESENTED WORK FROM: ARGENTINA · BELGIUM CANADA · DENMARK · ENGLAND FRANCE · GERMANY · JAPAN · SCOTLAND TAIWAN · THE UNITED STATES	
2013 PARTNERS: ARTS CLUB THEATRE COMPANY · ASIAN-CANADIAN SPECIAL EVENTS ASSOCIATION BACHELOR OF PERFORMING ARTS PROGRAM · BALLET BC · CAPILANO UNIVERSITY · CONTEMPORARY ART GALLERY · THE CULTCH · THE DANCE CENTRE · DOXA DOCUMENTARY FILM FESTIVAL · GREEN THUMB THEATRE · GRANVILLE ISLAND · GRUNT GALLERY · MUSIC ON MAIN · NORTH SHORE CREDIT UNION CENTRE FOR THE PERFORMING ARTS · PTC · SIMON FRASER COMMUNITY PRESENTATION SOCIETY · SFU WOODWARD'S · ROUNDHOUSE COMMUNITY ARTS AND RECREATION CENTRE THEATRE CONSPIRACY · TURNING POINT ENSEMBLE · URBAN CRAWL · VANCOUVER ART GALLERY			



REDRAWING THE ARTISTIC MAP ↓

The 2013 PuSh Festival has surpassed all expectations, and after the trials and tribulations our arts community has been through over the last year, for me it has been particularly poignant to see the Festival so triumphantly take centre stage with new audiences, new artists, new works, new partnerships, and new private and public supporters. There is nothing like a “good idea”—the more it plays out over time, the better it gets. And PuSh has once again proven just how good an idea it is.

From the Festival’s humble beginnings in 2005 up until this watershed year, PuSh has been about presenting acclaimed work from around the world and just around the corner. The Festival has also been about innovation and expanding the horizons of possibility for what the performing arts might be. The PuSh Festival is now a signature event for Vancouver. It is a beloved institution, synonymous with the city’s growing reputation as a centre for creative thinking about our contemporary world.

On behalf of the 2013 Festival team, staff and contractors, our board directors, our volunteers, our Leaders Council members, the participating artists, our organizational partners and their staff—thank you for **crossing the line**, for continuing to believe in PuSh and its ever-evolving vision, and for insisting unequivocally that arts and culture are at the centre of this city’s life, well-being and prosperity.



Norman Armour
Executive Director

On February 3rd, 2013, at the end of another amazing and transformative PuSh Festival, I was exactly where I wanted to be as an audience member: exhausted but exhilarated. Three months later, as the final numbers trickle in, I am exactly where I want to be as Board President: relieved and reinvigorated.

This is the essence of PuSh: uncompromising in the depth and quality of its programming, willing to take artistic risks, yet committed to fiscal responsibility and sustainable growth.

The 2013 Festival was a turning point on our journey: we reached new and bigger audiences; our media coverage was broader; the box-office was up; we forged new relationships with local sponsors; and the level of giving by our Patrons Circle members grew to unprecedented levels.

But the real measure of our success comes from less quantifiable indices, those moments in the dark (and sometimes broad daylight) that provoke us (*Winners and Losers*), or move us (*Testament*), or help us to see ourselves—and our city—more feelingly (*Do You See What I Mean?*). Behind such moments lies PuSh’s greatest resource: people. Our “human library” involves staff, board members, volunteers, presenting partners, artists and audience members in a dynamic exchange of energy, ideas, and engaged response.

Together we didn’t just cross the line in 2013; we redrew the artistic map. In 2014, our 10th anniversary, expect to be PuShed even further into uncharted territory.



Peter Dickinson
Board President

SHOWCASING INNOVATION+ANIMATING NEW CREATION ↓



»...A beautiful experience...What an honour to be gifted with so much trust, and to witness such curiosity, confusion, discovery, and surrender«

Volunteer Guide for *Do You See What I Mean?*

» This experience, this dance in the dark, took my breath away, in every way...a profound, exciting work. «

Marsha Lederman on *Do You See What I Mean?*, *The Globe and Mail*



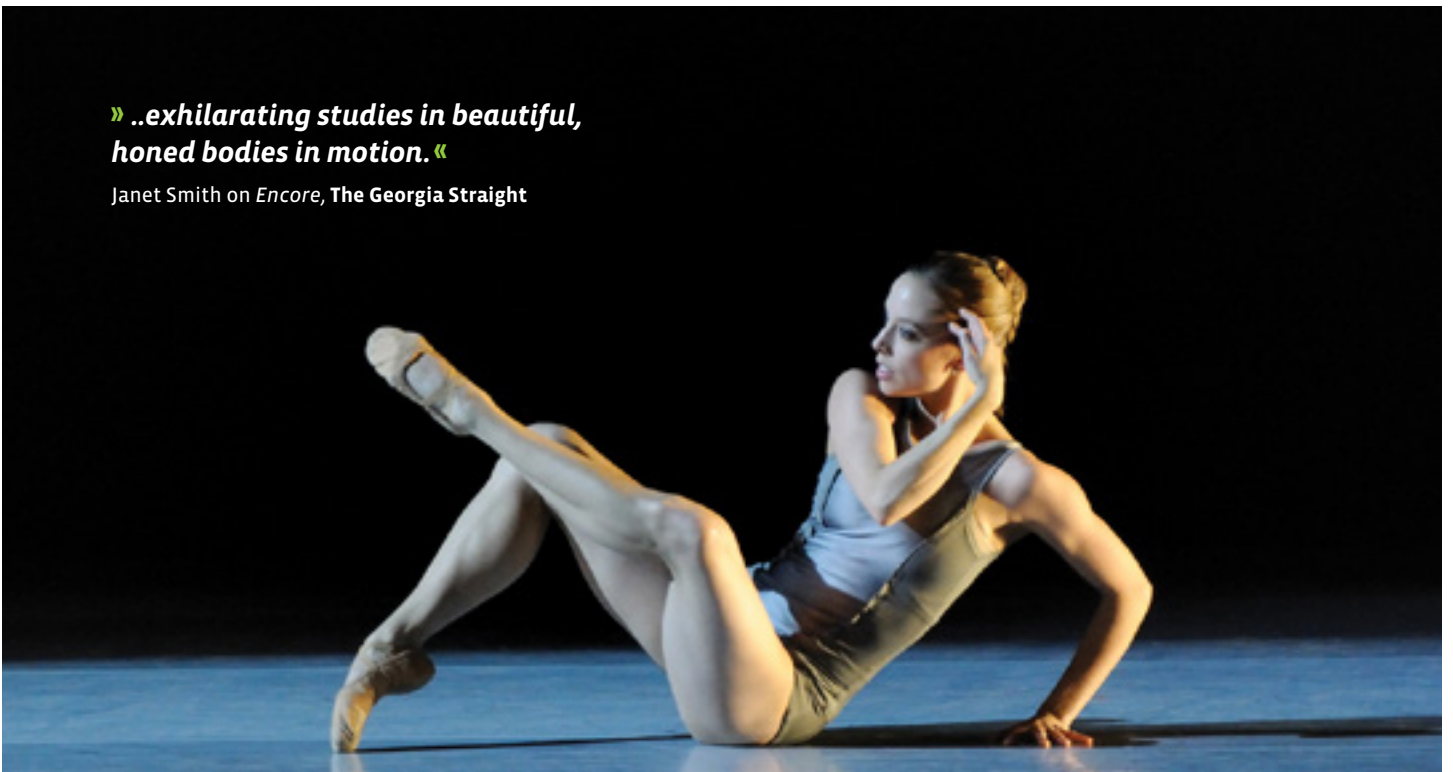
»Transforming the act of writing into a visual performance...«

Peter Dickinson on *Sometimes I think, I can see you*, performanceplacepolitics.blogspot.ca

↓ THE VERY BEST IN CONTEMPORARY PERFORMANCE

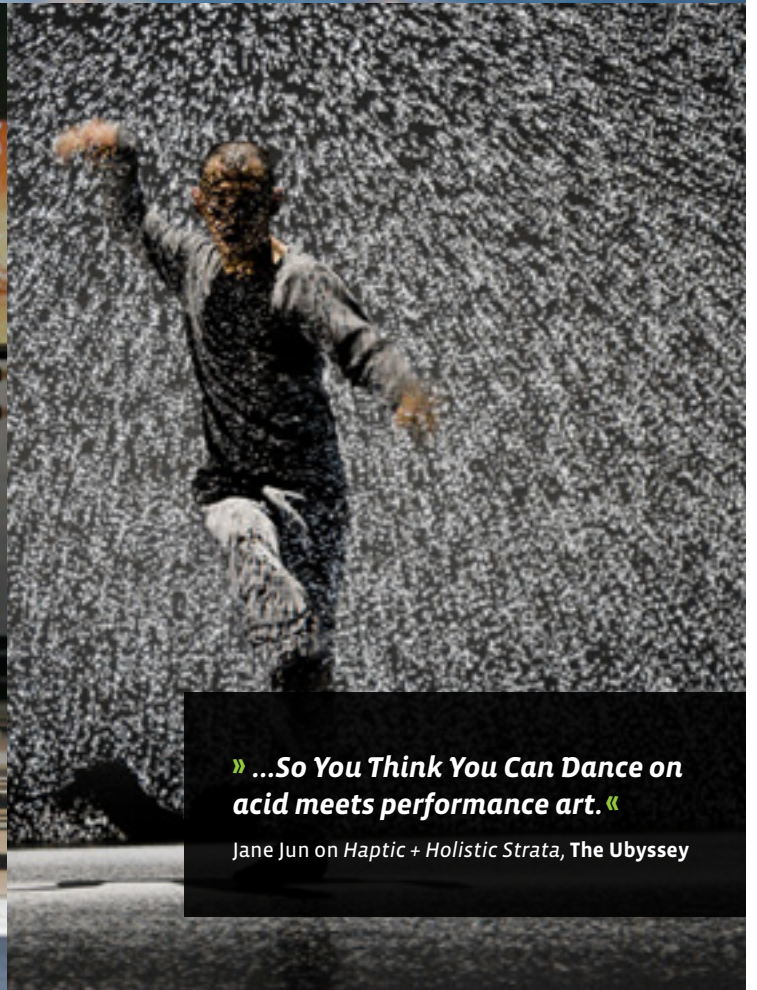
» ..exhilarating studies in beautiful, honed bodies in motion. «

Janet Smith on *Encore*, *The Georgia Straight*



» A fascinating evening that touched nerves and hearts... «

Jo Ledingham on *Testament*, *The Vancouver Courier*



» ...So You Think You Can Dance on acid meets performance art. «

Jane Jun on *Haptic + Holistic Strata*, *The Ubyyssey*

BREAKING NEW GROUND ↓

2005

2006

2007

2008

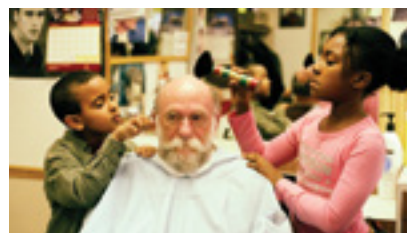
2009

» LAUNCH OF **THE PUSH ASSEMBLY** NETWORKING EVENT

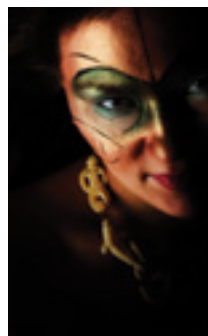


» **FIRST PUSH INTERNATIONAL PERFORMING ARTS FESTIVAL** WITH NINE SHOWS

» **FIFTH PUSH INTERNATIONAL PERFORMING ARTS FESTIVAL** WITH 19 SHOWS



» **THE GEORGIA STRAIGHT** BECOMES THE FOUNDING MEDIA SPONSOR OF PUSH



» **FIRST OPENING GALA** SIX-HOUR DURATIONAL PIECE *QUIZOOA* (FORCED ENTERTAINMENT, SHEFFIELD) ON GRANVILLE ISLAND

» **FIRST PARTNERSHIP** WITH ARTS CLUB THEATRE COMPANY ON A SOLD-OUT RUN OF *THE BLACK RIDER* (NOVEMBER THEATRE, EDMONTON)



» **LAUNCH OF CLUB PUSH** WITH THEATRE CONSPIRACY AT PERFORMANCE WORKS ON GRANVILLE ISLAND



» **FIRST COMMISSION** *NUNAVUT* (KRONOS QUARTET/TANYA TAGAQ)

» **FIRST WORLD PREMIERE** *CRIME AND PUNISHMENT* (NEWORLD THEATRE AND VANCOUVER MOVING THEATRE)



» **FIVE-PERSON BOARD OF DIRECTORS**, BUDGET \$500,000

» **FIVE-YEAR STRATEGIC PLAN** CREATED

» **\$15,000+ INDIVIDUAL DONATIONS** 94 DONORS

» **17-PERSON BOARD OF DIRECTORS**, BUDGET \$1 MILLION



2010

2011

2012

2013

- » PUSH LAUNCHES OFFICIAL CELEBRATIONS OF **VANCOUVER'S 125TH ANNIVERSARY** TOGETHER WITH THE CITY

- » **LEADERS COUNCIL INTRODUCED** WITH A MEMBERSHIP OF 22 CULTURAL INFLUENCERS

- » **YOUNG AMBASSADORS** PROGRAM INITIATED



- » **CLUB PUSH EXPANDS TO THREE WEEKS** WITH TWO SOLD-OUT NIGHTS FEATURING MARY MARGARET O'HARA AND PEGGY LEE

- » **SELECTED PUSH SHOWS MADE ACCESSIBLE** TO PATRONS WHO ARE BLIND, PARTIALLY SIGHTED, DEAF AND HARD OF HEARING

- » **INAUGURAL FREE FILM SERIES**

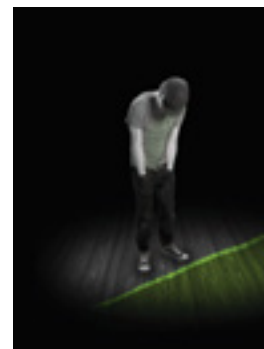
- » **NINE SHOWS PRESENTED AS PART OF THE VANCOUVER 2010 CULTURAL OLYMPIAD**, INCLUDING *THE SHOW MUST GO ON*—THE FIRST PERFORMANCE TO TAKE PLACE IN THE FEI AND MILTON WONG EXPERIMENTAL THEATRE AT SFU WOODWARD'S



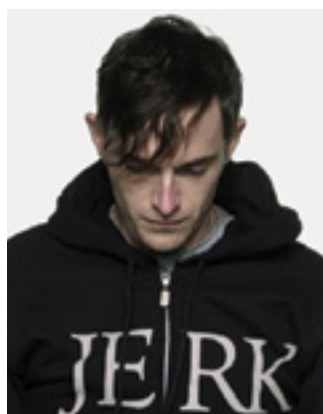
- » **LARGEST AUDIENCE:** *LA MAREA* (MARIANO PENSOTTI, BUENOS AIRES) OUTDOOR EVENT IN GASTOWN DRAWS OVER 6,500 PEOPLE
- » **LARGEST CAST:** *100% VANCOUVER* (THEATRE REPLACEMENT/SFU WOODWARD'S, VANCOUVER) WITH 100 EVERYDAY VANCOUVERITES ONSTAGE



- » FOLLOWING ITS PUSH-COMMISSIONED PREMIERE AT THE CLUB IN 2009, THE FULL-LENGTH VERSION OF ***DO YOU WANT WHAT I HAVE GOT? A CRAIGSLIST CANTATA*** (BILL RICHARDSON AND VEDA HILLE, VANCOUVER) **BECOMES THE RUNAWAY HIT** OF THE 2012 FESTIVAL



- » **PUSH ASSEMBLY EXPANDS TO THREE WEEKS WITH FREE EVENTS THROUGHOUT**



- » **SIGNIFICANT ONGOING SPONSOR PARTNERSHIPS** ARE ESTABLISHED WITH **VANCITY** AND **CTV**

- » VANCITY SUPPORTS AN **ABORIGINAL PERFORMANCE SERIES**



- » **BUDGET \$1.79 MILLION**

- » **\$105,521 INDIVIDUAL DONATIONS, 300+ DONORS**

GENERATING DIALOGUE AND EXCHANGE ↓

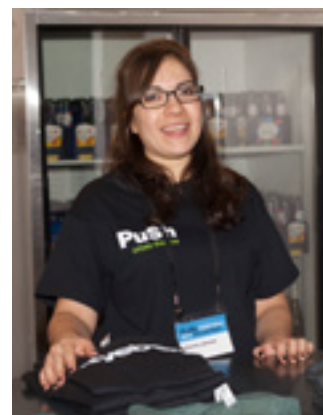


Over 230 practitioners, aficionados and industry professionals registered for the PuSh Assembly which had free events and networking opportunities throughout the Festival.



Free pre-show and post-show talks connected artists and audiences.

Over 270 people with a variety of skills, passions and interests, volunteered their time during PuSh 2013.



OUR CORPORATE PARTNERS: LEADERSHIP AND VISION IN THE COMMUNITY ↓



» With the PuSh Festival, we see an incredible opportunity to explore giving back to our city in new ways that reflect our values as a company, and that's why we're so very proud to be working with the festival in 2013. Our support of *Do You See What I Mean?* enables us to make **a deeper connection to creativity, collaboration and community at every level**, and to help share the benefits and enriching experiences that art allows. «

Michael Lansky *President, TERRA BREADS*



» Catering is a creative business. We strive to be a unique, inspired, diverse and innovative leader not only with the service & culinary creations we offer, but with the team members we have. **The PuSh Festival is an extension of our team.** We have been able to craft a synergy with like-minded artists, while at the same giving back to the community. **Win-Win!** «

Nicole Burke *Director of Catering Sales, EMELLE'S CATERING*



» me&lewis supports the Festival because **it gives the city something it desperately needs...a welcome PuSh of energy, creativity and expression.** The PuSh Festival helps to get open-minded Vancouverites through the doldrums of our soggy season... «

Paul Meehan *Principal & Creative Strategist, ME&LEWIS IDEAS INC.*

THANK YOU SPONSORS+FUNDERS ↓

Premier Media Partners



Production Partner

Cultural Partner



Official Creative Partner



Community Partner



Telecommunications Partner



Official Hotel



Official Caterer



Club PuSh Beer



Club PuSh Wine



Gala Partner



Transportation Partner



Media and Promotional Partners



Venue Partners



Vancouver Public Library



Public Funders and Foundations



Foreign Agencies



DISTRIBUTION PARTNERS JJ BEAN COFFEE ROASTERS, TERRA BREADS, CHOICES MARKETS, FESTIVAL CINEMAS. **BEHIND THE SCENES** ROCKY MOUNTAIN PRODUCTION SERVICES, GREAT NORTHERN WAY SCENE SHOP, BUDGET CAR & TRUCK RENTAL, SANDMAN HOTEL, MCMEDIA AUDIO VISUAL SERVICES. ARTSVEST VANCOUVER IS RUN BY BUSINESS FOR THE ARTS WITH THE SUPPORT OF THE GOVERNMENT OF BC AND CANADIAN HERITAGE.



Fiction(s) is a suite of interrelated works that explore the intersection of public space and contemporary practice in a playfully subversive reflection on our individual and collective lives.



ART DOES NOT EXIST WITHOUT PATRONS ↓

Thank you to our donors. Your gifts bring adventure and diversity, innovation and relevance, inspiration and rejuvenation to stages throughout Vancouver each January.

SUSTAINING DONORS

Bing Thom Architects Foundation, Maria Isabel Charlwood on behalf of Friends to Mankind, Mark James, Anndraya Luii, me&lewis ideas inc.

PATRONS CIRCLE DONORS

PRODUCERS (\$2,500+) ↓

Richard Cavell & Peter Dickinson*, Marna Disbrow, Chris Dobrzanski*, Leslie Nolin, The Organizational Culture Group, Leonard Schein.

CURATORS (\$1,000–2,499) ↓

Norman Armour*, Leanne Averbach, James Chen, Kenneth Owen Gracie*, Michael Heeney & Hilary Meredith, Jane Heyman*, DD Kugler, Thomas Lightburn, Susan Mendelson & Jack Lutsky, McCarthy Tétraut Foundation, Rodger So, The R&J Stern Family Foundation, Jennifer Stanley*, Michael Stevenson, Betty Verkuil, Jason Wang, Fei Wong, Max Wyman & Susan Mertens, Lien Yen.

ADVOCATES (\$500–999) ↓

Jack Amar & Deborah Roitberg, Robert Armour, Mary & Herb Auerbach, Nona Avren, Roberta Beiser*, Jeff Booth, Lorna Brown*, Karen Gelmon & Peter Busby, Anne-Marie Dekker, Mo Dhaliwal, Marilyn Dilligenti-Smith & Wayne Smith, Jamie Evrard, Dani Fecko, Sam Feldman & Janet York, Ian & Teddy Forsyth, Kent Gallie, Robert Gardiner, Sandra Garossino, Cheryl Geisler & Mark Stein, Karen Gelmon & Peter Busby, Susan Grossman, Kathy & Stan Hamilton, Christopher Hunt*, Alessandro Juliani & Meg Roe, Gail & Alan Johnson, Sherrie Johnson, Chris Kantowicz, Judi Korbin, Gerald Kowalenko, Sudha Krishna, Ronald Lauenstein, Winkie & Alan Macdougall, Dan Mangan, Ken Manning*, Paula Martin, Brenda McLean, Linda & Ward McMahon, JJ Bean, Inna & Michael O'Brian, Gayle Pastrick, Andrew Petter, Alice Niwinski*, Cindy Reid & Rory Gylander, Alyson Rimmer, Minna Schendlinger*, Joanne Simpson & Ben Deis, Laine Slater*, Paul & Joan Whitney, Thomas Woods.

SUPPORTERS (\$150–499) ↓

Anonymous (7), Evan & Ingrid Alderson, Sascha Armour, Marijka Asbeek Brusse, M K Barclay, Louise Bentall, Jeremy Berkman & Sheila MacDonald*, Jennifer Clement, Judith Coffin*, Ann Connors, David Curll, Paula Danckert, Lois Dawson, Elvy Del Bianco, Gloria & Bob Dickinson, Michael Dobbin, Bea Donald, Katrina Dunn & Parnelli Parnes, Eugene & Carmencita Dy, Megan Ellis & Company, Kathy Evans, Everclean Building Services, Margery Fee, Alex Ferguson, Jane Flick & Robert Heidebreder, Heather Fraser, Vicki Gabereau, Carole Gerson, Tony Giacinti, Kara Gibbs & Michael McGuire, Edward & Marianne Gibson, Arlene Gladstone, Eugene Gorodetsky, Dr. Evelyn J. Harden*, Margo

Harper, Rosemary Hopkinson, Elsie Jang, Jessie Johnston, Yoshiko Karasawa, Heather Kennedy, David (DK) Kerr, Beverley Kort & Ray Schachter, Jocelyn & Fiona Macdougall, Elizabeth MacKenzie, Kathy Mann, Laurel March, Tara & Jim Travis*, Tanya Marquardt, Melody Mason, Lindsay McMahon, Laura Moore, Daniel Murphy, Judith Penner, Nancy Pollak, Annie Reid & Lara Fraser, Rachel Rocco, Brian Rocky, Ilze Roffey, Janet Rogers, Mary Schendlinger, Neil Scott, Kathryn Shaw*, Diana Solomon, Donald Steele, Vera Tatko, Jas Uppal, Mauro Vescera, Denis Walz, Darcy Wiebe, Christianne Wilhelmson & John Webber, Stephen Williams, Donna Wong-Juliani*.

FRIENDS (\$20–149) ↓

Anonymous (10), Christopher Adkins, Sigrid Albert, André & Sheila Anzarut, Kathleen & Simon Barilla, Nancy Barker, Marc Baumgartner, Linda Belton, Fiona Black, Darlene Blaeser & Grant McAre, Dawn Boblin & Nicky Stockton, Latifah Brett, Brown Strachan Associates, Colin Browne, Claudia Buckley, Frances Bula, Shauna Butterwick, Sara Bynoe, Ken Cameron, Tim Carlson, Jeff Carmichael, Katharine Carol, Lauren Carter, Yok Leng Chang, Yih Hsiang Cheng, Michael Clague, Jeremy Collie-Holmes, Alexander Daughtry, Luisa Devette, Margaret Dickson, Lesley Duffy, Margaret Eberle, Susanna Egan, Regina Eustace, Trish Everett, Susan Freedman & William Galloway, Amanda Fritzlan & Marcus Youssef, Louise Gadd, Camille Gingras, Angela Greville, Stephen Heatley, Paul Hecht, Peter Herrndorf, OC, Joyce Hinton, Jane Hope, Bill Houghton, Arlene Howard, Wendy Hulko, Heather Hyde, Paula Jardine, Alistair Johnston, Arlene Johnston, Linda Johnston, Richard Kadulski, Natalie Kardum, Alison Kelly, Gerard Kerr, Elizabeth Kidd, Lillian Komiyama, Judy & Dave Korbin, Peter Ladner, Peter Leblanc, Jo Ledingham, David Lee, Julie Longo, Karen Love, Lydia Marston-Blauw*, Jeni May, Kerry McPhedran, John Mendoza, Kevin Mooney, Marjorie Munkley, Kirsty Munro, Tom Newton, Ellie O'Day*, Arline Oishi, Barbara Parkin, Iain Pennington, Brenda Peterson, Cory Philley, Shayna Plaut, Peter Quin-Conroy, Joanne Rankin, Martha Rans, Peter Richards, Nancy Rosenblum, Aliya Rozenberg, Shaundeh Runka, Eva Sharell, George Shipley, Sophie Sienema, Leslee Silverman, Lindy Sisson, Matthew & Matilda So, Michelle So, Mike Stack, Maria Stanborough, Peter & Rosa Stenberg, Kristin Stockley, Susan Stout, Heather Tak, Camilla Tibbs*, William Taylor, Ronnie Tessler, Nicci Theroux & Brock Lumsden, Anona Thorne*, Rebecca Toolan, Valerie Van Clieaf, Colleen Van Hooft, Bessie Wapp, Susan & Jerry Wasserman, Gregory Weir, Donna White, Jean Wilson*, May Winram, Garry Wolfater, Richard Wolfe.

GIFTS IN MEMORY OR IN HONOUR ↓

Anonymous in memory of Kensaku Asano and Alishia Harris, Mary & Herb Auerbach in memory of Milton Wong, Marna Disbrow in memory of Anna Wong, Dr. Evelyn J. Harden in memory of John Wood, Mary Schendlinger in memory of Jackie Crossland.

** Donors identified with an asterisk have been giving to the PuSh Festival for at least five consecutive years. We are so honoured to have so many deeply committed individuals who continue to see value in supporting what we do. An extra special thank you goes out to you!*

Donors from May 1, 2012 - April 30, 2013

For more information about the Patrons Circle, contact Jocelyn Macdougall in the Development Department at 604.605.8284 ex 202 or jocelyn@pushfestival.ca.
You can also learn more online at pushfestival.ca/donate.



EXPANDING HORIZONS ↓

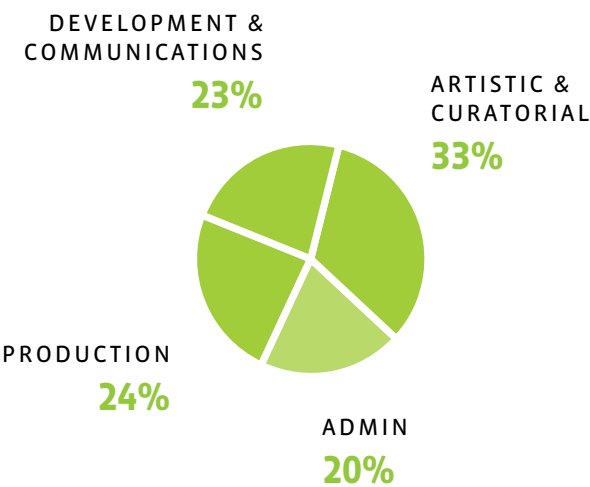
The 2013 Festival was a remarkable financial and artistic success. The organization held true to the strategic priorities of our Business Plan and continued to diversify our three main revenue streams, achieving a goal of balancing earned, grant and contributed revenues.

Managing a budget of nearly 1.8 million dollars—an increase of almost 20% over the previous year—was a balancing

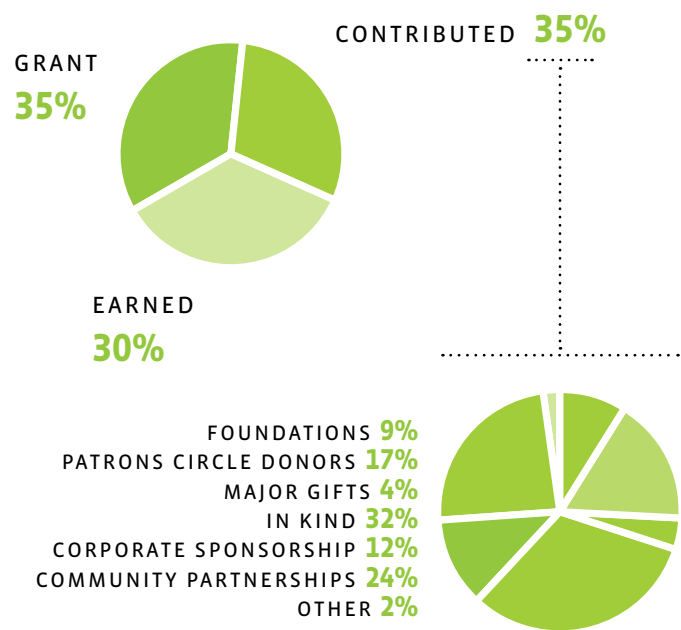
act of good governance, renewed investment in curation and presentation, and maintenance of fiscally prudent but fair and reasonable business practices, particularly with regard to personnel compensation. Our communications and development investments continue to bear fruit, as evidenced by increases to both earned and contributed revenues this year over last.

TOTAL BUDGET \$1.79 MILLION
CORPORATE SPONSORSHIP AND DONATIONS \$405,000
INDIVIDUAL DONATIONS \$105,521 FROM 300+ DONORS

EXPENSES ↓



REVENUE ↓



2013

PuSh

INTERNATIONAL PERFORMING ARTS FESTIVAL



OUR MISSION

The PuSh International Performing Arts Festival engages and enriches audiences with adventurous contemporary works in a spirit of innovation and dialogue.

PuSh is one of Vancouver's signature events. Produced over three weeks each January, the PuSh Festival presents groundbreaking work in the live performing arts.

The PuSh Festival expands the horizons of Vancouver artists and audiences with work that is visionary, genre-bending, multi-disciplined, startling and original. The Festival showcases acclaimed international, Canadian and local artists and mixes them together with an alchemy that inspires audiences, rejuvenates artists, stimulates the industry and forges productive relationships around the globe.

The Festival is a broker of international partnerships, a meeting place for creative minds, a showcase of Canada's best and an incubator of brilliant new work.



[FACEBOOK.COM /PUSHFESTIVAL](https://www.facebook.com/pushfestival)

[TWITTER.COM /PUSHFESTIVAL](https://twitter.com/pushfestival)

[PUSHFESTIVAL.CA /BLOG](http://pushfestival.ca/blog)

[FLICKR.COM /PHOTOS/PUSHFESTIVAL](https://www.flickr.com/photos/pushfestival)

[YOUTUBE.COM /PUSHFESTIVAL](https://www.youtube.com/pushfestival)

STAFF

EXECUTIVE DIRECTOR **NORMAN ARMOUR**

MANAGING DIRECTOR **MINNA SCHENDLINGER**

COMMUNICATIONS MANAGER **KARA GIBBS**

DEVELOPMENT MANAGER **JOCELYN MACDOUGALL**

OPERATIONS MANAGER **LINDSAY MCMAHON (ON LEAVE)**

OPERATIONS COORDINATOR **JENN UPHAM**

AUDIENCE SERVICES MANAGER **JANELLE WONG-MOON**

BUSINESS MANAGER **LINDA GORRIE**

ASSOCIATE CURATOR **DANI FECKO**

PRODUCTION MANAGER **DAVID KERR**

TECHNICAL DIRECTOR **JEREMY BAXTER**

MEDIA RELATIONS **ELLIE O'DAY**

SOCIAL MEDIA AND GALA COORDINATOR **SARA BYNOE**

DEVELOPMENT AND COMMUNICATIONS ASSISTANT **OLGA ALEXANDRU**

ARTIST SERVICES MANAGER **MARIJKA ASBEEK BRUSSE**

HOSPITALITY COORDINATOR **LEANNE ZACHARIAS**

GROUP SALES COORDINATOR **TARA TRAVIS**

AUDIENCE SERVICE REPRESENTATIVES **BRI PROKE, JO SHIN**

VOLUNTEER COORDINATOR **QUINN PETERS**

CURATORIAL ADVISORS **SHERRIE JOHNSON, KRIS NELSON**

EXECUTIVE AND OFFICE ASSISTANT **GILLIAN THOMSON**

IT CONSULTANT **STEVEN TONG**

FESTIVAL PHOTOGRAPHERS **TIM MATHESON, LIESBETH BERNAERTS**

GRAPHIC DESIGN & CREATIVE PLANNING **ME&LEWIS (PAUL MEEHAN, JEFF LEWIS, ADAM MCDONNELL & JAMES FALLOON)**

WEBSITE PROGRAMMER **KARLA WAKEFIELD**

CLUB PUSH

CURATORS **NORMAN ARMOUR, TIM CARLSON, VEDA HILLE**

PRODUCER **CAMERON MACKENZIE**

MEDIA RELATIONS **EMMA LANCASTER**

BOARD OF DIRECTORS

PRESIDENT **PETER DICKINSON**

VICE-PRESIDENT INTERNAL COMMUNICATIONS

MICHAEL STEVENSON

TREASURER **RODGER SO**

SECRETARY **JESSIE JOHNSTON**

JENNIFER CLEMENT

CHRIS DOBRZANSKI

MARIE-CLAIRE DY

KENT GALLIE

MARGO HARPER

MICHAEL HEENEY

CHRIS KANTOWICZ

RONALD LAUENSTEIN

LESLIE NOLIN

GAYLE PASTRICK

LAINÉ SLATER

VERA TATKO

BETTY VERKUIL

CHRISTIANNE WILHELMSON

LEADERS COUNCIL

CHAIR **MAX WYMAN, OC**

GLENN ALTEEN

ROBERTA BEISER

WENDE CARTWRIGHT

MARIE CLEMENTS

BARBARA COLE

MO DHALIWAL

MARIE-HÉLÈNE FALCON

SAM FELDMAN

VICKI GABEREAU

JOHN MACLACHLAN GRAY, OC

PETER HERRNDORF, OC, O. ONT

SUDHA KRISHNA

KRISTINA LEE PODESVA

GLORIA LOREE

CHRIS LORWAY

PAUL MEEHAN

SCOTT MICHAELS

GWYN ROBERTS

LEONARD SCHEIN

JOEL SOLOMON

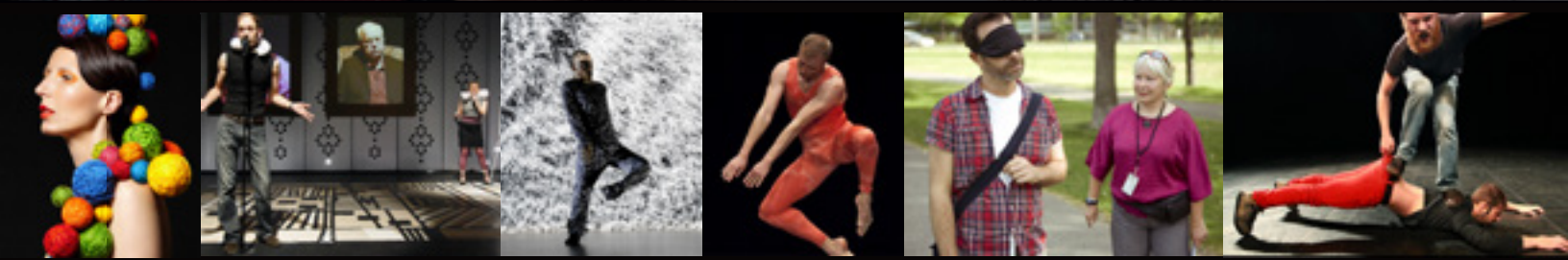
BING THOM

MICHAEL TURNER

PAUL WHITNEY

FEI WONG

pushfestival.ca ←



have you been **PuShed**?